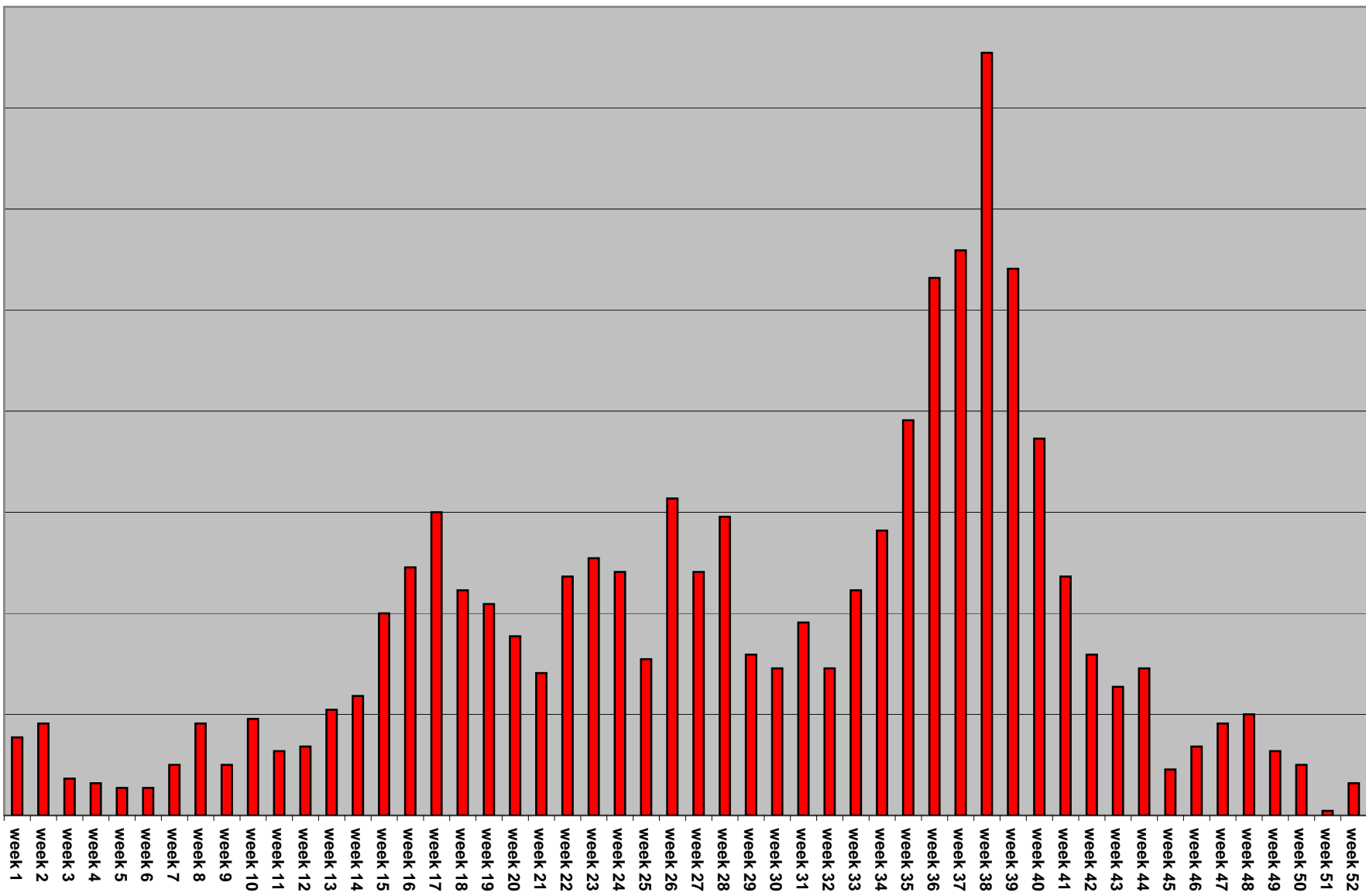
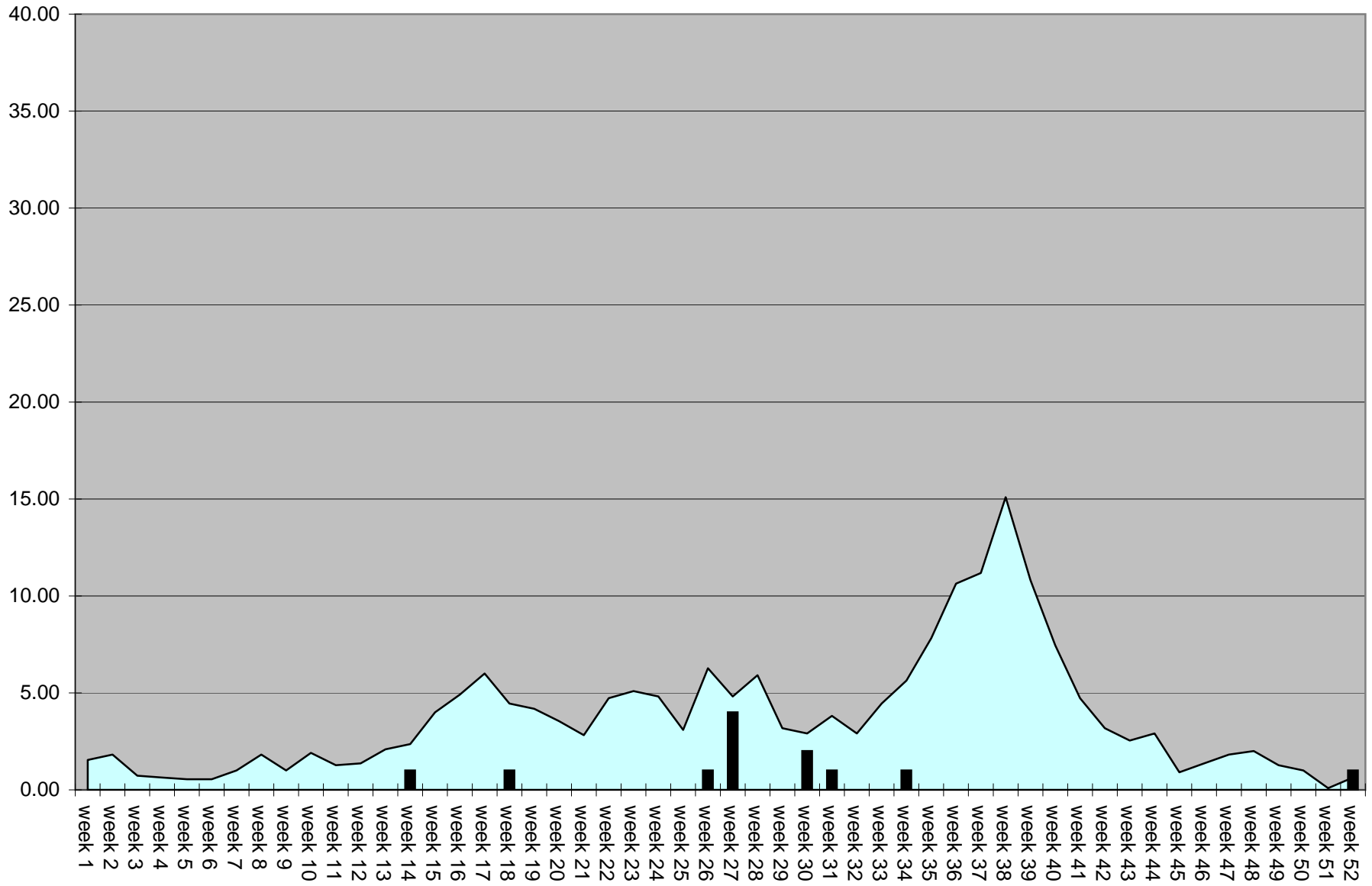


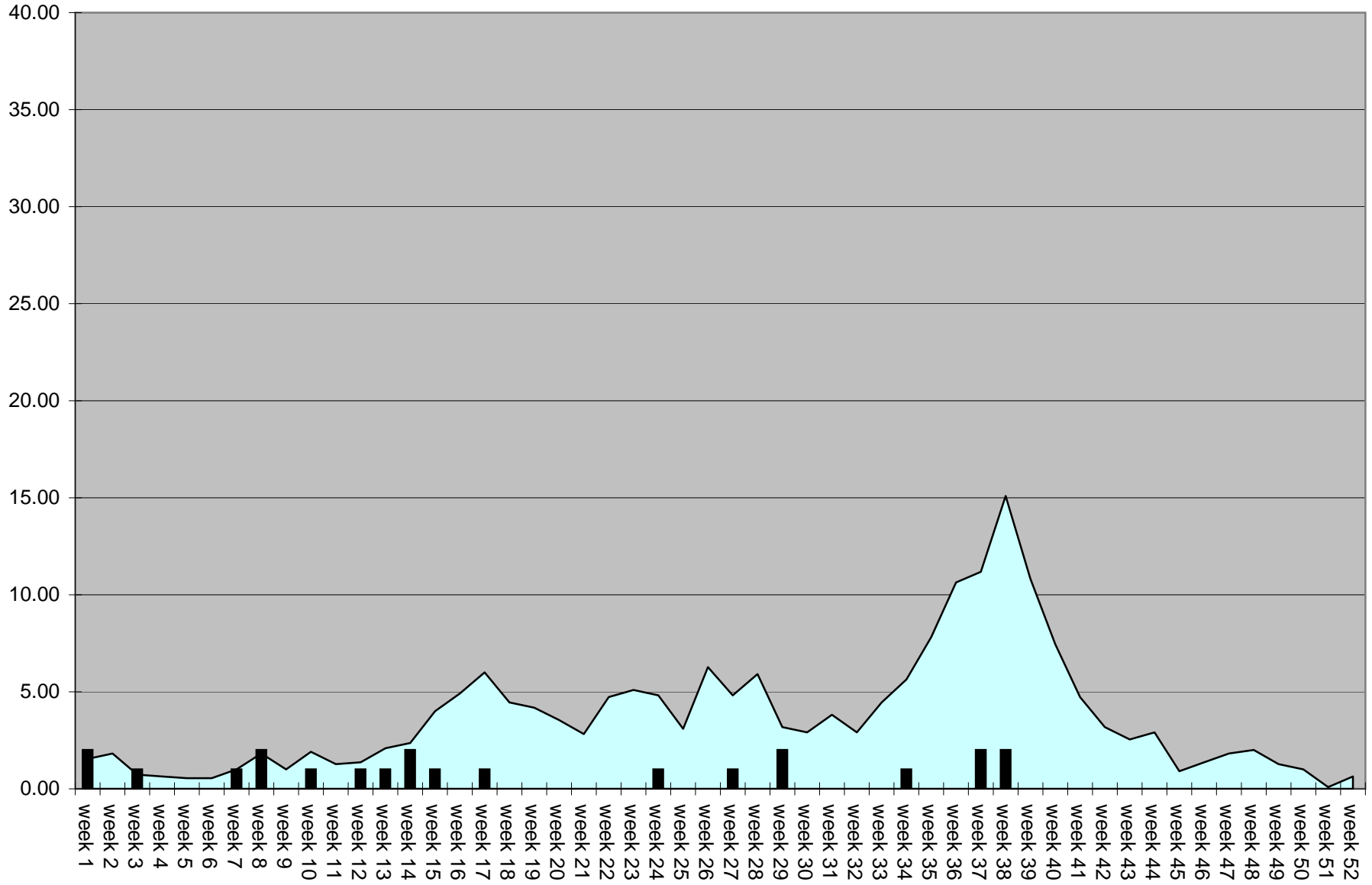
An. quadrimaculatus Average



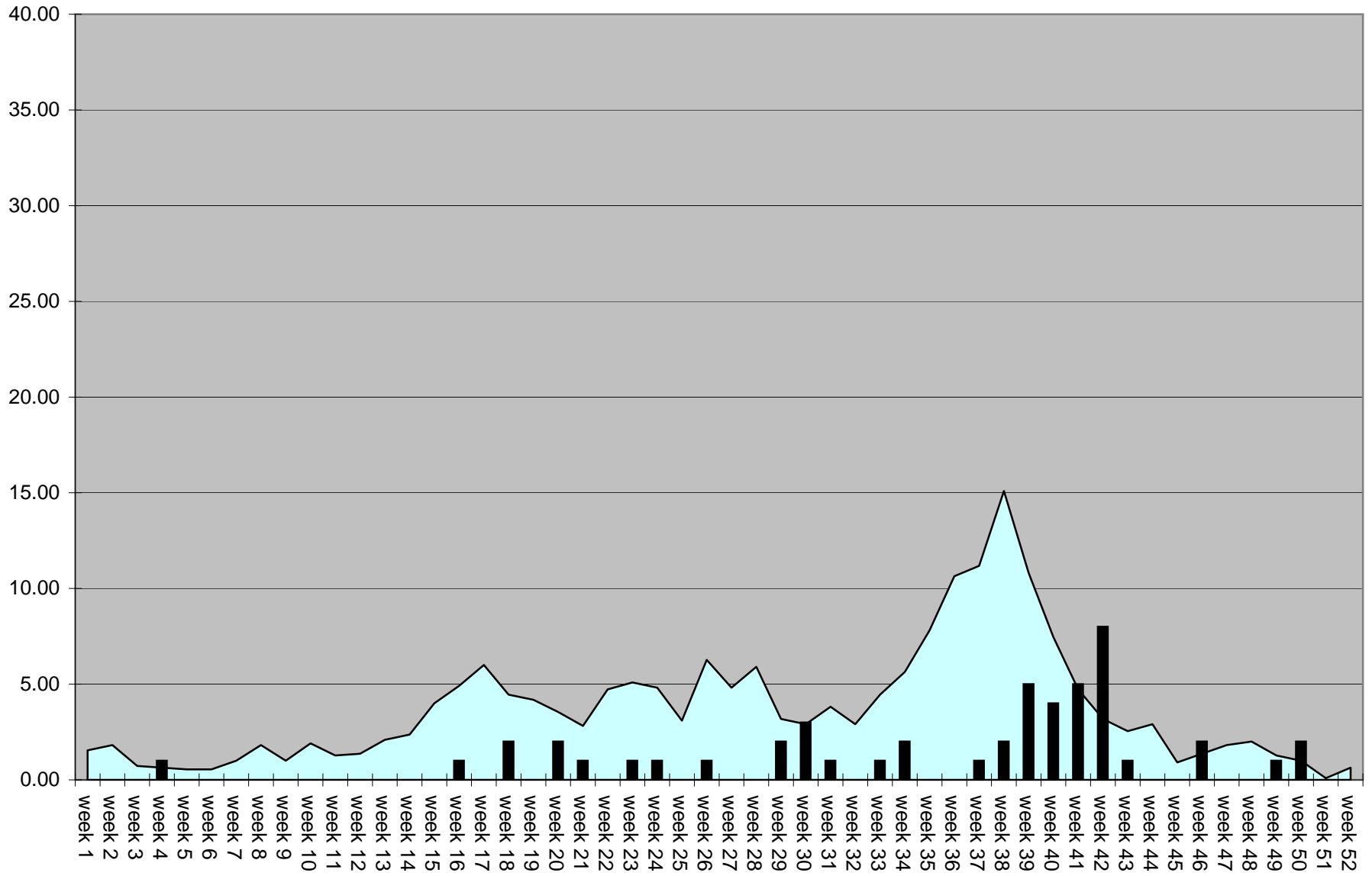
An. quadrimaculatus Average ■ **An. quadrimaculatus 2008**



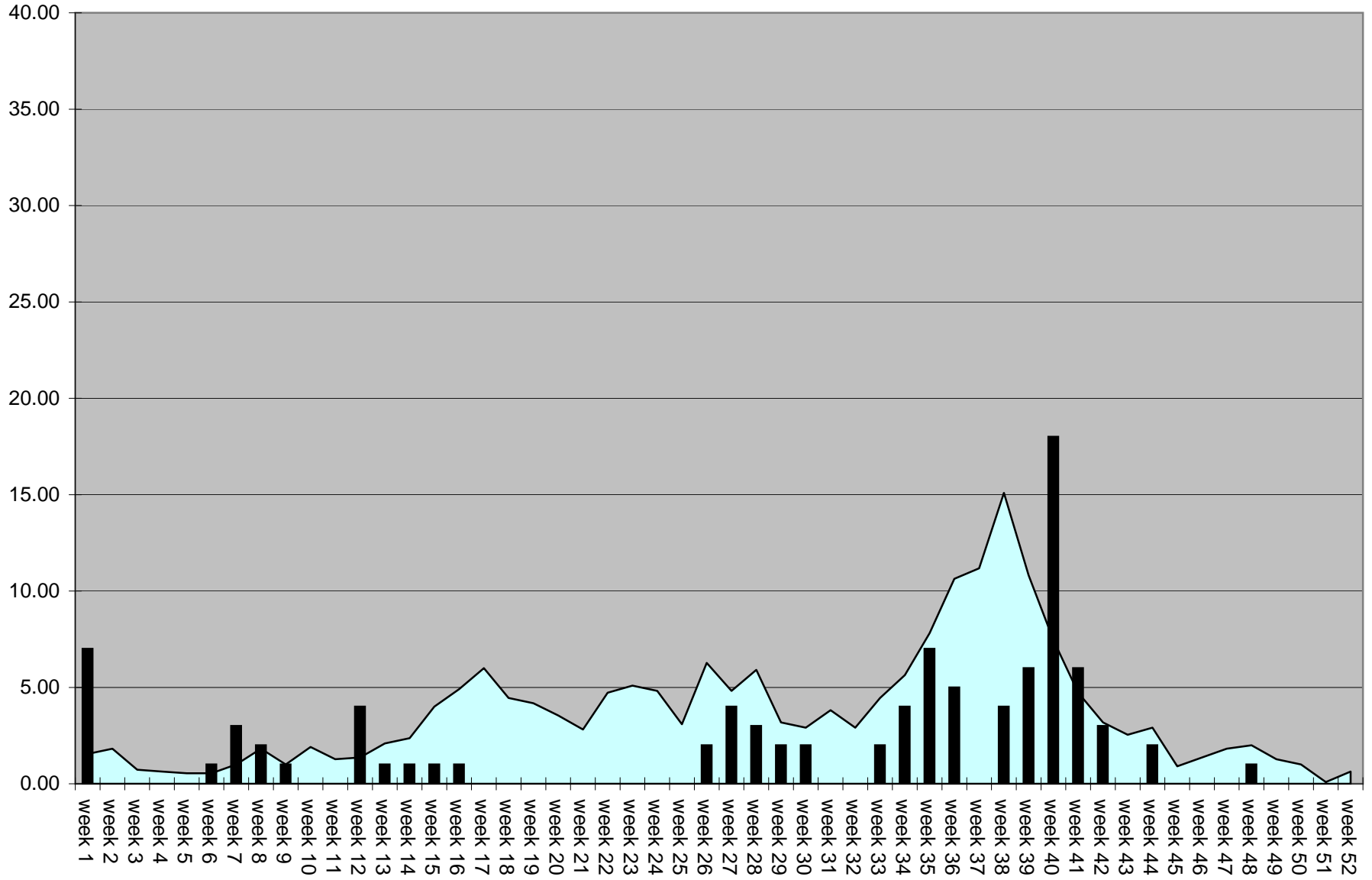
■ An. quadrimaculatus Average ■ **An. quadrimaculatus 2007**



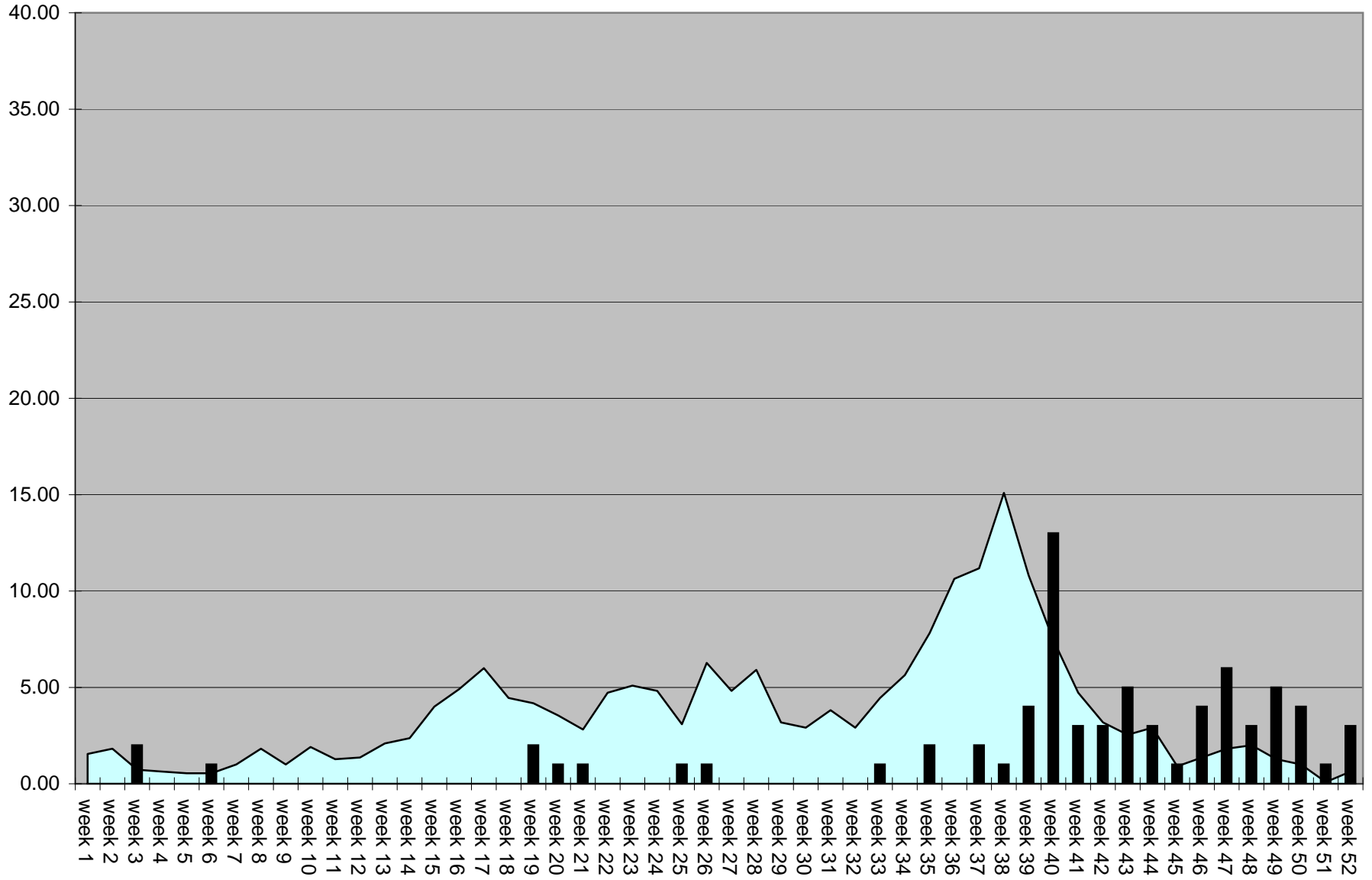
An. quadrimaculatus Average ■ **An. quadrimaculatus 2006**



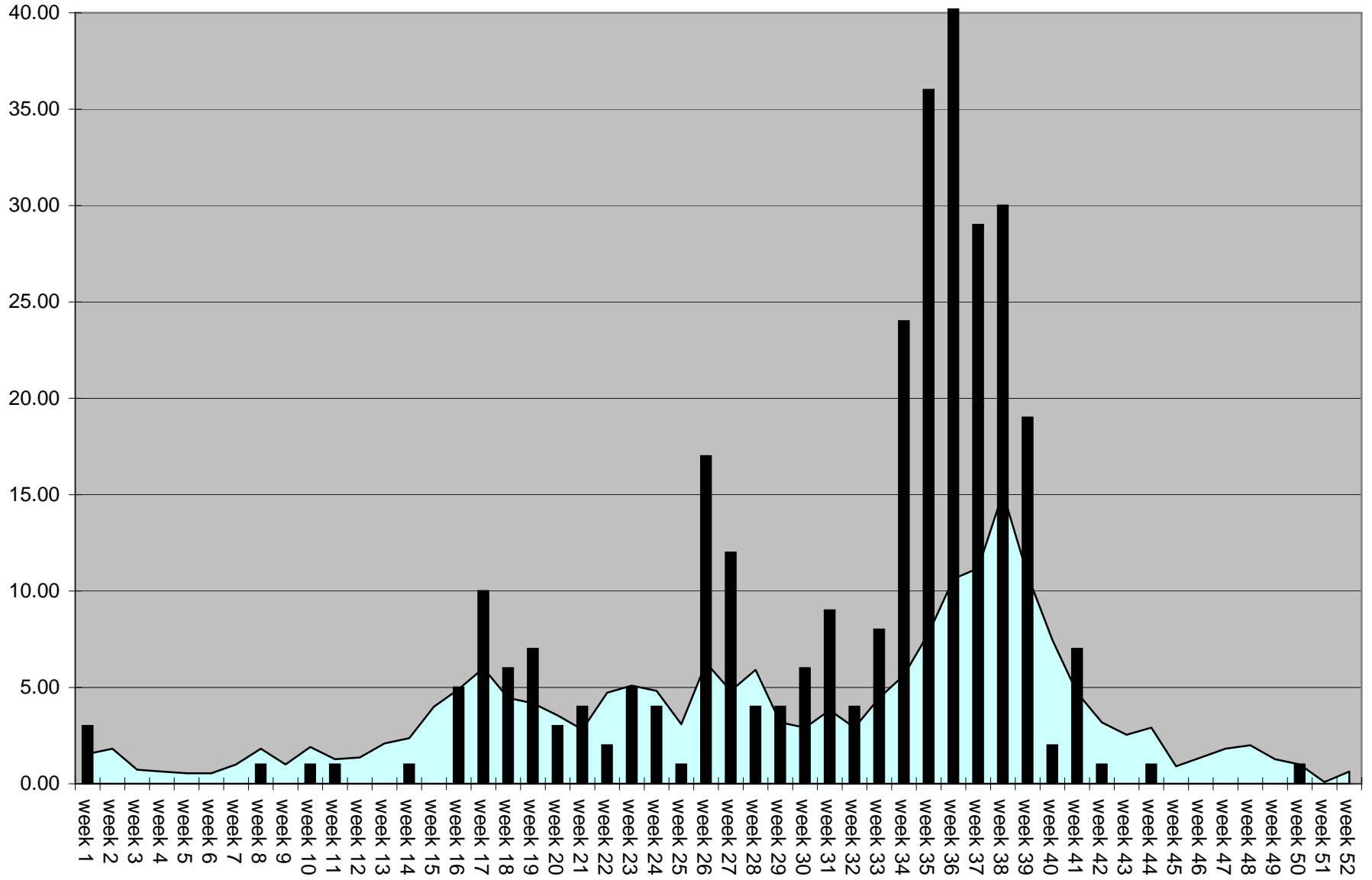
■ An. quadrimaculatus Average ■ **An. quadrimaculatus 2005**



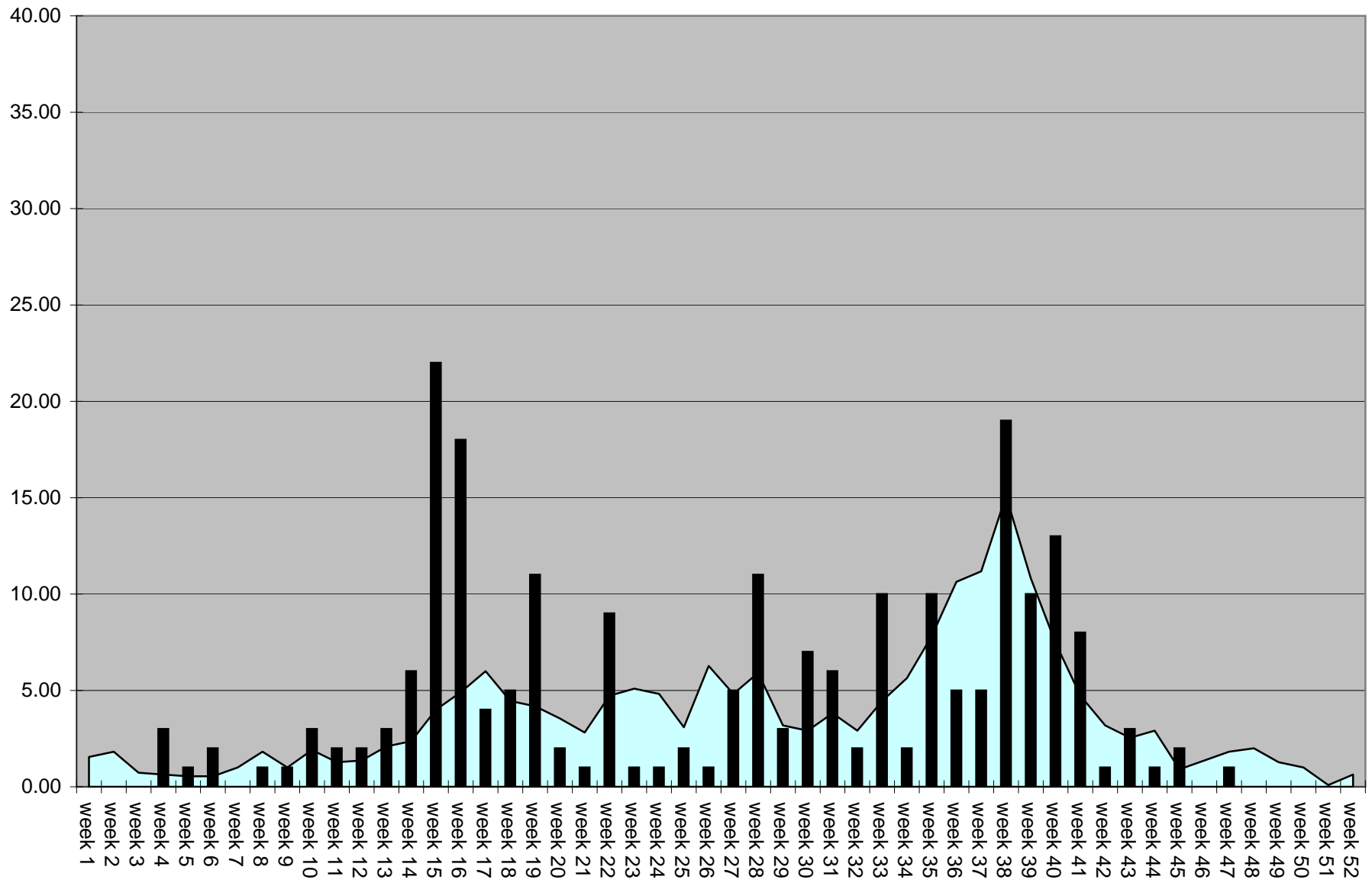
An. quadrimaculatus Average ■ **An. quadrimaculatus 2004**



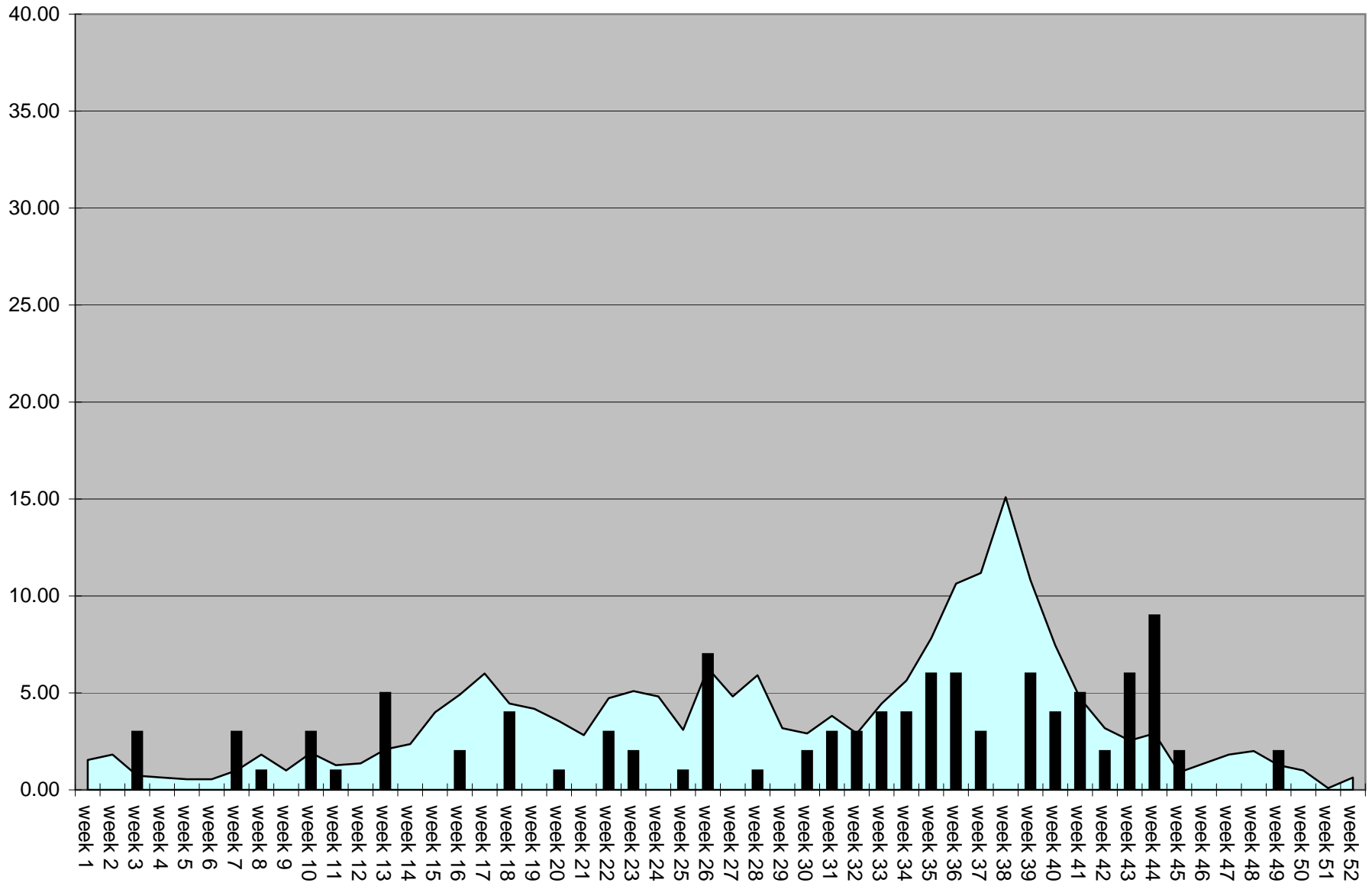
An. quadrimaculatus Average ■ **An. quadrimaculatus 2003**



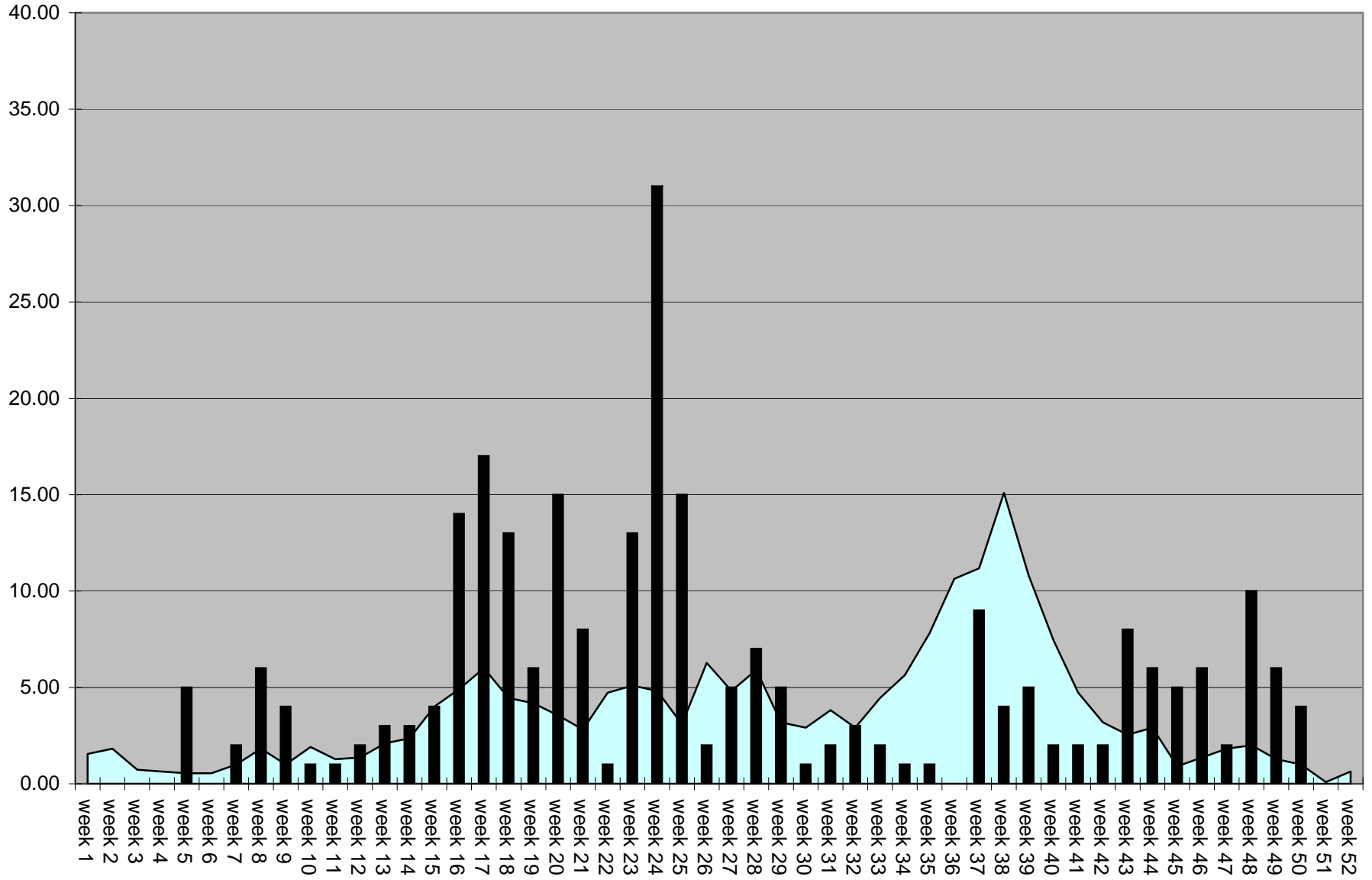
An. quadrimaculatus Average ■ **An. quadrimaculatus 2002**



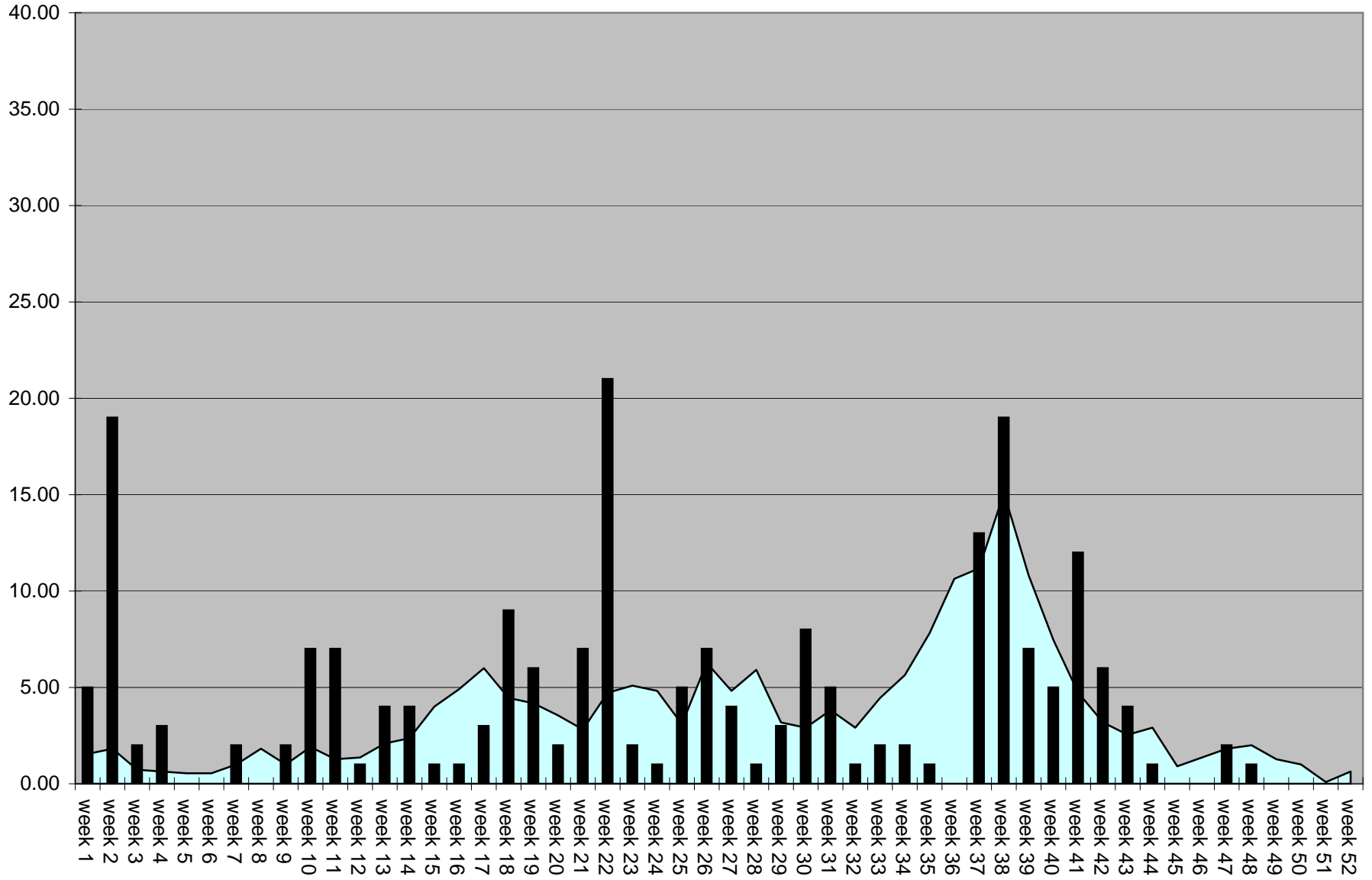
■ *An. quadrimaculatus* Average
 ■ *An. quadrimaculatus* 1995



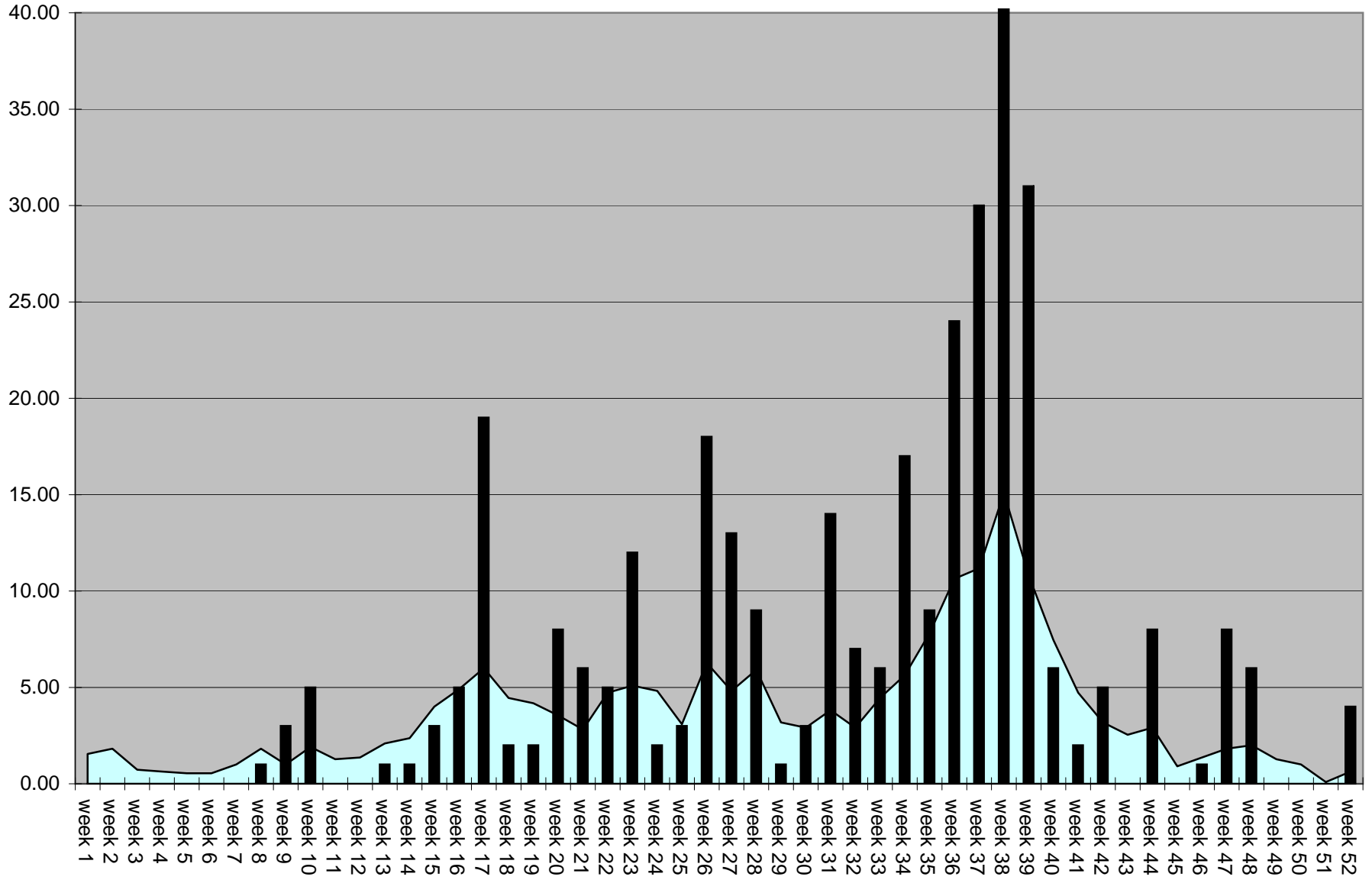
■ *An. quadrimaculatus* Average
 ■ *An. quadrimaculatus* 1994



■ *An. quadrimaculatus* Average
 ■ *An. quadrimaculatus* 1993



An. quadrimaculatus Average ■ **An. quadrimaculatus 1992**



■ *An. quadrimaculatus* 1991 **■ *An. quadrimaculatus* Average**

