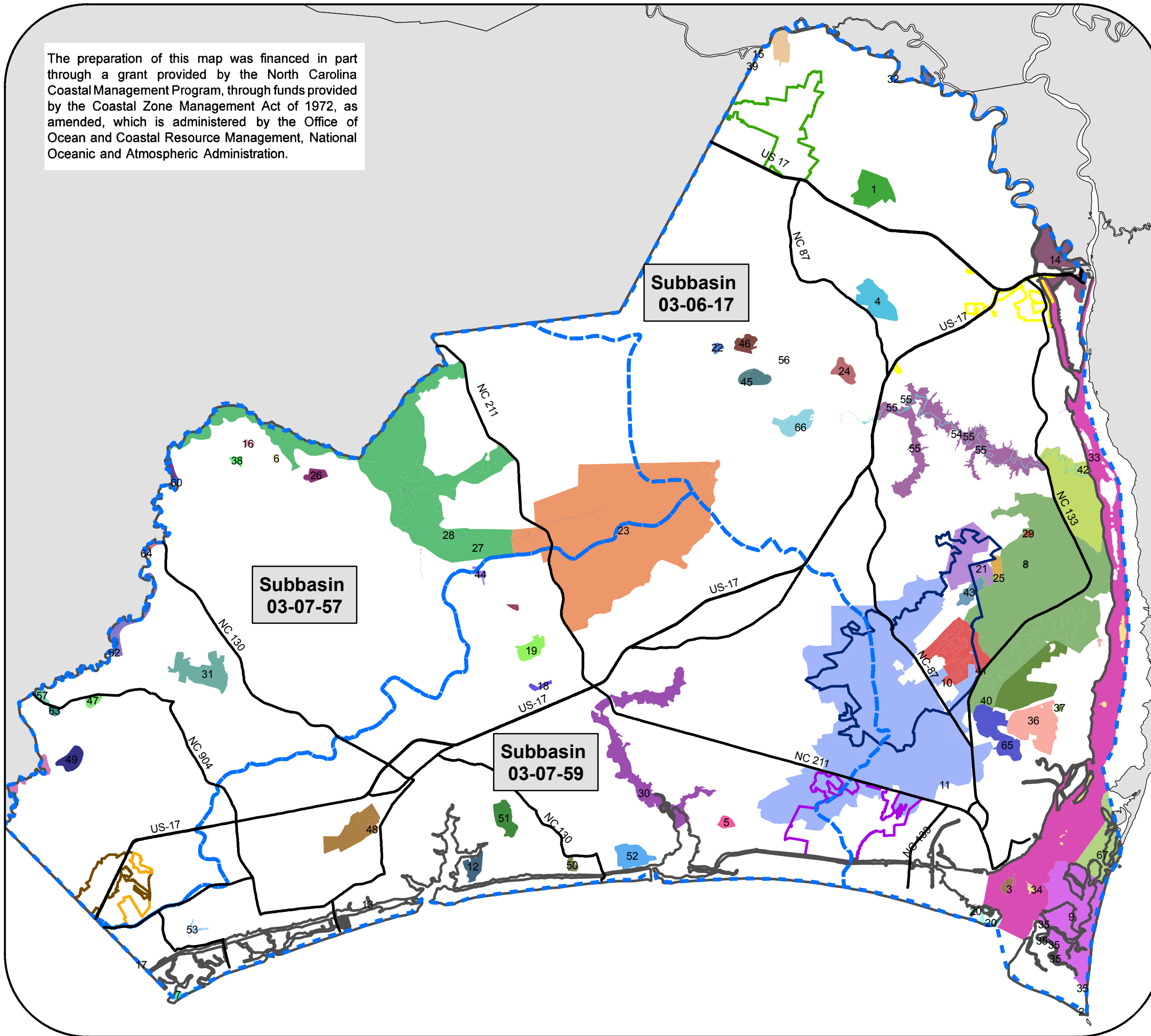




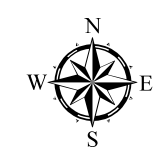
Brunswick County Land Use Plan

Significant Natural Heritage Areas

The preparation of this map was financed in part through a grant provided by the North Carolina Coastal Management Program, through funds provided by the Coastal Zone Management Act of 1972, as amended, which is administered by the Office of Ocean and Coastal Resource Management, National Oceanic and Atmospheric Administration.



- Legend**
- NC County Boundaries
 - Brunswick County
 - NC DOT Primary Roads
 - Subbasins
 - Belville Corporate Limits
 - Boiling Spring Lakes Corporate Limits
 - Carolina Shores Corporate Limits
 - Carolina Shores ETJ
 - Northwest Corporate Limits
 - St. James Corporate Limits
- Significant Natural Heritage Areas**
- 1. ALLIGATOR BRANCH SANDHILL AND FLATWOODS
 - 2. BALD HEAD ISLAND
 - 3. BATTERY ISLAND
 - 4. BATTLE ROYAL BAY
 - 5. BIG CYPRESS BAY AND PONDS
 - 6. BIG NECK ROAD AT MILLPOND BAY
 - 7. BIRD ISLAND
 - 8. BLUE POND
 - 9. BLUFF ISLAND AND EAST BEACH
 - 10. BOILING SPRING LAKES LIMESINK COMPLEX
 - 11. BOILING SPRING LAKES WETLAND COMPLEX
 - 12. BOONE NECK MARITIME FOREST
 - 13. BRANTLEY ISLAND
 - 14. BRUNSWICK RIVER/CAPE FEAR RIVER MARSHES
 - 15. BRYANT MILL (GREENBANK) BLUFF
 - 16. CAMP BRANCH SAVANNA REMNANT
 - 17. COLKINS NECK REMNANT
 - 18. CUMBEE POND AND SANDHILLS
 - 19. FALL SWAMP/MIDDLE RIVER LIMESINK COMPLEX
 - 20. FORT CASWELL DUNES AND MARSHES
 - 21. FUNSTON BAYS
 - 22. GOOSE POND LIMESINKS
 - 23. GREEN SWAMP
 - 24. HENRYTOWN SAVANNA
 - 25. HOG BRANCH PONDS
 - 26. JUNIPER BAY SAVANNA
 - 27. JUNIPER CREEK FLOODPLAIN
 - 28. JUNIPER CREEK/DRIVING CREEK AQUATIC HABITAT
 - 29. LITTLE BLUE POND/BLACK POND
 - 30. LOCKWOODS FOLLY RIVER TIDAL WETLANDS
 - 31. LONG BAYS SAVANNA AND CAROLINA BAYS
 - 32. LOWER BLACK RIVER SWAMP
 - 33. LOWER CAPE FEAR RIVER AQUATIC HABITAT
 - 34. LOWER CAPE FEAR RIVER BIRD NESTING ISLANDS
 - 35. MIDDLE ISLAND
 - 36. MOTSU BRUNSWICK FOREST NATURAL AREA
 - 37. MOTSU NORTHWEST NATURAL AREA
 - 38. MYRTLE HEAD SAVANNA
 - 39. NEILS EDDY LANDING
 - 40. ORTON POND
 - 41. ORTON POWERLINE LOOSESTRIFE SITE
 - 42. PLEASANT OAKS/GOOSE LANDING PLANTATIONS
 - 43. PRETTY POND LIMESINK COMPLEX
 - 44. PROSPECT RIDGE WHITE CEDAR FOREST
 - 45. RABONTOWN LIMESINKS
 - 46. RATTLESNAKE BRANCH SANDHILLS
 - 47. REGAN RIDGE-AND-SWALE BOGGY OPENINGS
 - 48. SANDY BRANCH SAND RIDGE AND BAY COMPLEX
 - 49. SCIPPIO SWAMP RIDGE-AND-SWALE BOGGY OPENINGS
 - 50. SECESSION MARITIME FOREST
 - 51. SHALLLOTTE CREEK SANDHILLS
 - 52. SPRING CREEK PONDS
 - 53. SUNSET BEACH WOOD STORK PONDS
 - 54. TOWN CREEK AQUATIC HABITAT
 - 55. TOWN CREEK MARSHES AND SWAMP
 - 56. TURKEY BRANCH SANDHILL
 - 57. WACCAMAW ISLAND SAVANNA
 - 58. WACCAMAW RIVER AQUATIC HABITAT
 - 59. WACCAMAW RIVER BEECH ISLAND SWAMPS
 - 60. WACCAMAW RIVER CROSS SWAMP BOTTOMLANDS
 - 61. WACCAMAW RIVER OXBOW SITE
 - 62. WACCAMAW RIVER REEVES AND GORE LAKE BOTTOMLANDS
 - 63. WACCAMAW RIVER RIDGE-AND-SWALE BOGGY OPENINGS
 - 64. WARDS LAKE
 - 65. WHITE SPRING PONDS COMPLEX
 - 66. WINNABOW SAVANNA AND SANDHILL
 - 67. ZEKES ISLAND ESTUARINE SANCTUARY



1 inch equals 19,000 feet

