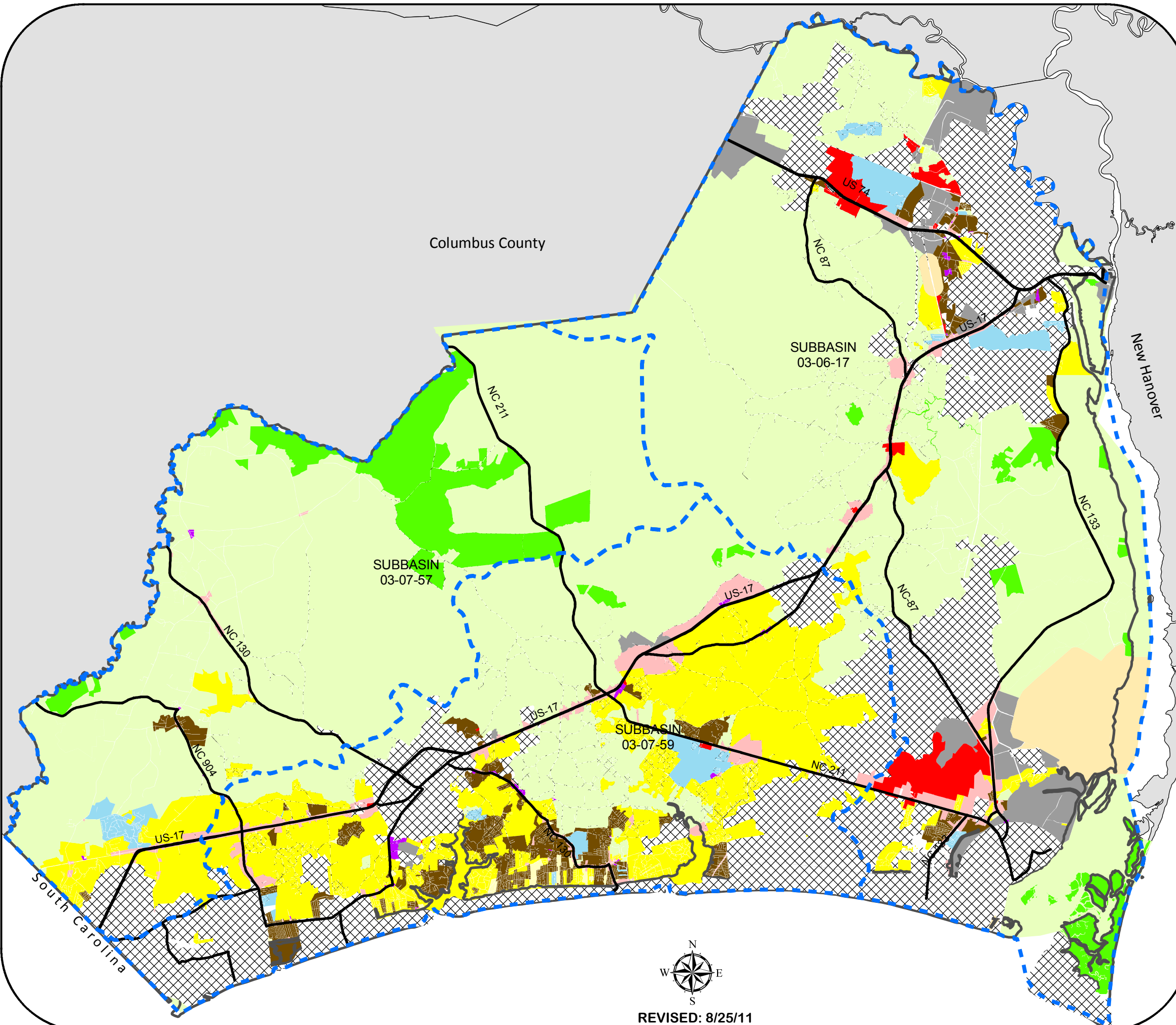




# Brunswick County Land Use Plan *Zoning*



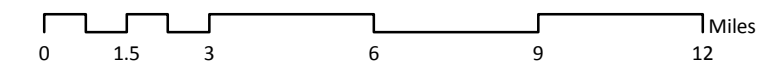
**Legend**

- Subbasins
- NC DOT Primary Roads
- Incorporated Areas
- Brunswick County

**Zoning**

- Commercial Intensive
- Neighborhood Commercial
- Commercial Low Density
- Industrial General
- Military Installation
- R-6000 Residential
- R-7500 Residential
- MR-3200 Multifamily
- SBR-6000 Residential
- Rural Residential
- Conservation and Protection
- Incorporated
- NC County Boundaries

1 inch = 18,527 feet



The preparation of this map was financed in part through a grant provided by the North Carolina Coastal Management Program, through funds provided by the Coastal Zone Management Act of 1972, as amended, which is administered by the Office of Ocean and Coastal Resource Management, National Oceanic and Atmospheric Administration.



REVISED: 8/25/11