

ITEM	MANUFACTOR / MODEL #
1	SERVICE DISCONNECT
2	AUTOMATIC TRANSFER SWITCH
3	DUPLEX PUMP CONTROL PANEL
4	RTU PANEL
5	ANTENNA TOWER 45ft.
6	YAAGI ANTENNA
7	3/4" PVC SHEET
8	COAX CABLE
9	COAX CABLE N-FEMALE
10	POLYPHASER
11	LMR 600 GROUNDING KIT
12	

* FOR THOMPSON TECHNOLOGY REP CONTACT SUR-GEN (910-253-0484)
ACCEPTED MANUFACTORS (THOMPSON TECHNOLOGY, ENERCON, RUSSELL ELECTRIC)

** FOR DUPLEX PUMP CONTROL PANEL AND RTU PANEL STANDARD DESIGN CONTACT
RSI (704-588-8288)
LORD & COMPANY INC. (803-802-0060)
CURRY CONTROLS

- NOTES:
- (A) CONDUIT 1-1/4" RIGID CONDUIT
 - (B) METER BASE AND SERVICE ENTRANCE DISCONNECT MAY BE MOUNTED ON THE BACK IF THERE IS NO ROOM ON THE FRONT
 - (C) 1 7/8" STAINLESS STEEL UNISTRUT PANEL BOARD SUPPORTS. 3 CROSS SUPPORTS BETWEEN PANEL BOARD AND GALVENIZED SUPPORTS
 - (D) ONE 1&7/8" UNISTRUT AND A 3/4" UNISTRUT MOUNT ON THE BOTTOM OF THE 1 7/8" PEECE TO SUPPORT THE BOTTOM OF THE DUPLEX CONTROL PANEL

NOTES:
Radio Must have a Constant Radio Signal of -85 db or Less. Contractor is Responsible for achieving this signal and may need to raise antenna from a minimum height of 40ft to achive this. If antenna tower is raised above 40 ft contractor is responsible for guiding the tower per Rohm Tower Guiding Specs. Contractor should conduct a Radio Path Study for Proper Antenna Height.

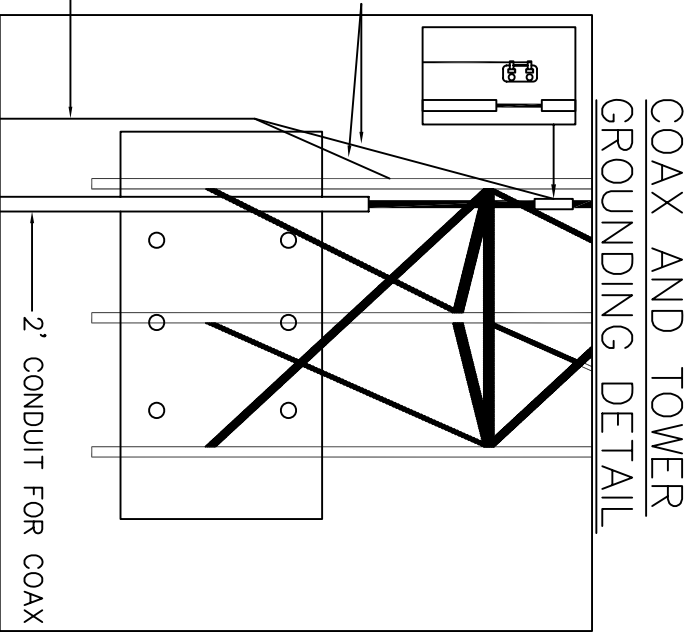
Coax Cable must be tied to tower using Nylon Weatherable Ty-raps with 120 lb tensile rated Ty-raps. Ty-raps must be every 3 feet apart.

Antenna and Coax connection must be wrapped with a water tight material and taped.

10' FOOT MAST (1-1/4" RIGID CONDUIT)

TOP SECTION (MODEL 25AG Qty.1 SECTIONS)

10' STANDARD SECTION (MODEL 25G SECTION)



5' SHORT BASE (MODEL SB25G5 Qty.1 SECTION)

ROHN 25G TOWER

SEE ROHN INSTALLATION INSTRUCTION FOR INSTALLING ANTENNA TOWER

WIRES AND NSI BLOCKS FOR PUMP CONNECTION
WIRES AND NSI BLOCKS FOR PUMP CONNECTION

CONTROL PANEL POST AND CONDUITS SHALL BE OUTSIDE OF WETWELL CONCRETE SLAB
CONTROL PANEL POST SHALL BE SET IN CONCRETE TO PROVIDE SUPPORT.

USE SEAL-OFFS FROM WETWELL OR VAULT TO DUPLEX PUMP CONTROL PANEL
(USE HARDENING SEALING MATERIAL IN SEAL OFF)

EACH CONDUIT FROM WETWELL MUST HAVE A NEMA 4X 316 STAINLESS STEEL JUNCTION BOX BELOW SEAL OFF AND BE 18" ABOVE GROUND LEVEL.
JUNCTION BOX #1 MUST HAVE TERMINALS FOR FLOAT CONNECTIONS
JUNCTION BOX #2 MUST HAVE TERMINALS FOR SEAL FAIL AND TEMP
JUNCTION BOX #3 MUST HAVE TERMINALS FOR SEAL FAIL AND TEMP
USE NON HARDENING MATERIAL IN CONDUIT ENTERING JUNCTION BOX

CONTROL PANEL ELEVATION

NOT TO SCALE

DATE	09/21/07	DRAWN BY	S.T.E	ENGINEER	R. FALDR	SCALE	NONE
Brunswick County TITLE-DESCRIPTION SEWAGE LIFT STATION CONTROL PANEL ELEVATION PROJECT BRUNSWICK CO. SCADA SYSTEM DRAWING NUMBER 7							