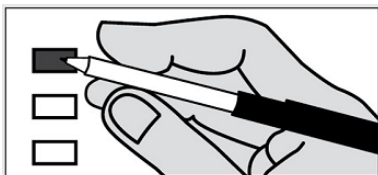


Instructions

For Correctly Marking Ballot

DO

- Use black or blue pen
- Completely fill in the box to the left of each candidate or selection of your choice *
- If you make a mistake, request a new ballot from a poll worker



DO NOT

- DO NOT use a pencil or pen that is not black or blue
- DO NOT mark lightly
- DO NOT partially fill the box



*A marker with a thicker tip is available upon request at the ballot station. With the marker, a single swipe will completely fill in the rectangle.