

**BRUNSWICK COUNTY  
REQUEST FOR PROPOSALS FOR  
EMERGENCY WATERSHED PROTECTION PROJECT ROUND 3**

**Addendum I**

The below questions were asked from interested contractors. Responses are in red. Questions and responses are included as Addendum I.

1. Is it typical for all 323,000 acres of Brunswick County to be sprayed when the contract is activated?

The acreage listed in the RFP is a comprehensive estimate of the populated (structures) areas of Brunswick County.

*“The actual treatment area may fluctuate based on the immediate emergency response needs of the County.”*

Spray block applications: *“Activation will be based upon criteria found in the FEMA APPENDIX G: MOSQUITO ABATEMENT and in conjunction with the Brunswick County Mosquito Control Supervisor.”*

2. Does the spray window always end at 10:30pm or is that temperature dependent? Could that time be flexible to ensure all acres are covered in 4 days?

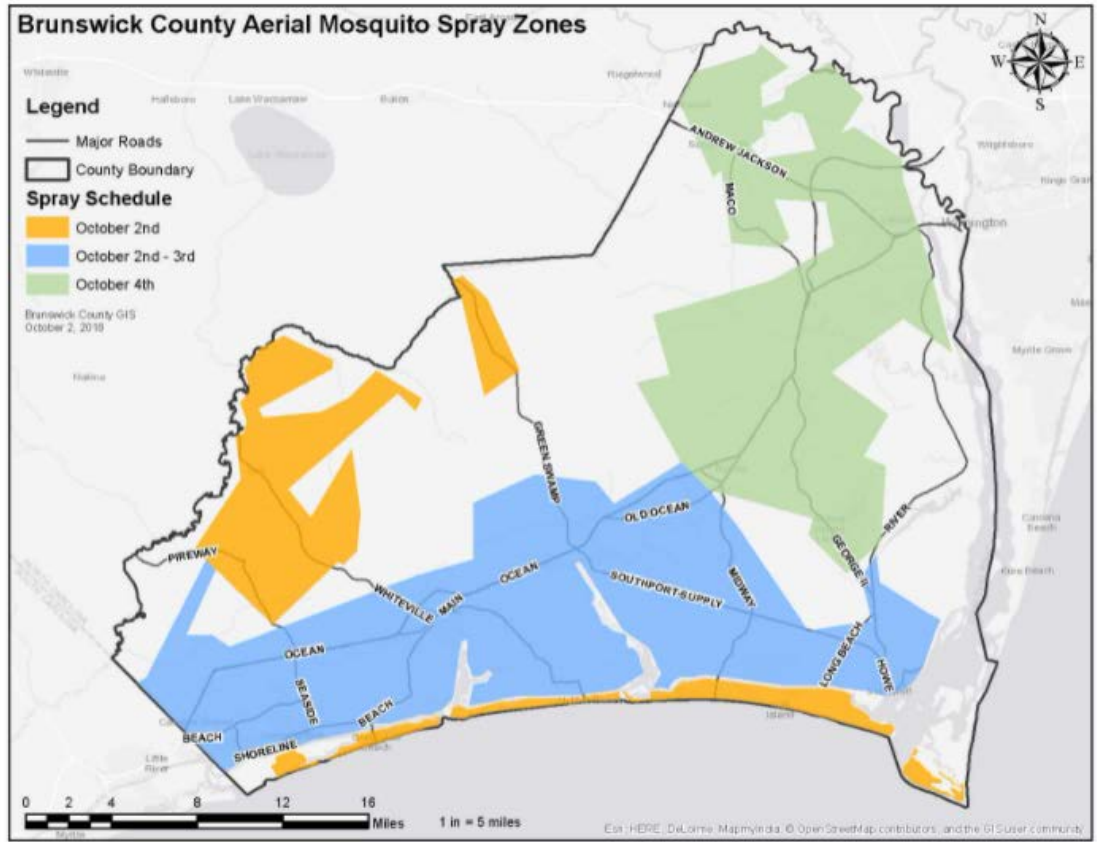
The Brunswick County Mosquito Control Supervisor will approve all schedules and flight times.

*“The contractor shall notify Brunswick County of the flight(s) schedule and path(s) before work begins. To maximize abatement, **spraying shall be done at peak target mosquito activity and when environmental conditions exist that are in accordance with label instruction.** Flight times must be preapproved by Brunswick County.”*

3. Could an example of previous spray blocks be provided to analyze resources needed?

*“The actual treatment area may fluctuate based on the immediate emergency response needs of the County.”*

For reference only:  
Hurricane Florence Press Release



Aerial mosquito spray (Photo: Brunswick County)

- Is Brunswick County requiring the submission of the dump exemption letter to be included with the proposal at time of submission?

The Contractor must meet all FAA requirements. The dumping exemption letter must be made available if requested by Brunswick County.